

## What is the Preschool Bridging Model?

The Preschool Bridging Model is designed to enhance the quality of child care for three to five year old children in Sacramento County. This is achieved through workforce and site development strategies that include on-site mentoring and coaching support for private child care centers and family child care homes, educational and quality improvement planning, and instructional materials to enhance classroom environments. The model promotes seamless kindergarten transitions for children and their parents/guardians by facilitating continuity between early care and education providers and elementary schools.

## How will children and their families benefit?

### Children will receive:

- ✍ Health and developmental screenings
- ✍ Enhanced quality learning experiences
- ✍ School readiness activities for transition into kindergarten

### Families will receive:

- ✍ Kindergarten transition information
- ✍ Information about local community resources
- ✍ Referrals to family support services
- ✍ Leadership and education opportunities

## How will it benefit me as a provider?

### Site Development

- ✍ Program quality rating scales – Early Childhood Environmental Rating Scale (ECERS) and Family Child Care Environmental Rating Scale (FCCERS) – conducted in each participating site
- ✍ Environmental planning and development based on ECERS or FCCERS ratings
- ✍ Instructional materials to enhance the learning environment

### Instructional Support

- ✍ On-site instructional support through mentoring and coaching
- ✍ Consultation and technical assistance

### Work Force and Professional Development

- ✍ Linkage to the California Preschool Instructional Network (CPIN) and other professional development opportunities
- ✍ Information about professional development incentive programs such as Comprehensive Approaches to Raising Educational Standards (CARES) and Staff Retention and Training (AB212)
- ✍ Information on accessing AA and BA cohort programs

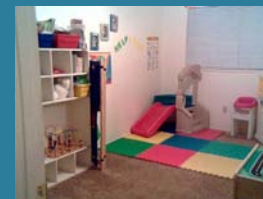
### Kindergarten Transition/School Readiness

- ✍ Developmental screenings for children
- ✍ Vision and hearing screenings for children
- ✍ Linkage to school district information and services
- ✍ School readiness activities for parents and children that are similar to those offered in public preschools and Head Start programs
- ✍ Countywide collaboration, communication, and coordination of school readiness events

## What providers have shared:

“PBM has given me the support I needed to continue my professional growth.”  
–Family Child Care Provider

Before PBM



After PBM



“PBM helped me create the positive changes I wanted to see happen in my center!”  
–Private Preschool Owner/Director

## How can I participate?

To participate, you must be willing to:

- ✍ Have the environmental rating scale completed in your center or family child care home
- ✍ Develop and implement an environmental and instructional action plan with assistance from Preschool Bridging Model staff
- ✍ Follow through on the action plan that has been created
- ✍ Present information on the First 5 School Readiness evaluation process to parents (as needed)

For more information about this exciting opportunity, contact Ginger Swigart at the Sacramento County Office of Education – (916) 228-2463.

## What are the services and resources provided?

- ✎ An Early Childhood Environmental Rating Scale (ECERS) or Family Child Care Rating Scale (FCCERS) is conducted at each participating site to develop an environmental and instructional action plan
- ✎ An early childhood education specialist provides on-site mentoring, coaching, consultation and technical assistance to participating site staff
- ✎ An early childhood education specialist assists participating site staff with instructional curriculum planning to individualize appropriate learning opportunities for children
- ✎ PBM staff facilitate linkages to local workforce and professional development opportunities
- ✎ Stipends may be offered to purchase instructional materials that will enhance the learning environment
- ✎ A family advocate provides families with information about school district and community resources
- ✎ With parental consent, PBM staff conduct a vision, hearing and developmental screening for children
- ✎ PBM staff offer school readiness and kindergarten transition, resources and activities



David W. Gordon, County Superintendent

Martin J. Cavanaugh, Deputy Superintendent

Joyce E. Wright, Ed.D., Assistant Superintendent  
Instructional Support Services

Natalie Woods Andrews, Ed.D., Director  
School Readiness Department

## PRESCHOOL BRIDGING MODEL

*Bringing Together Public and Private Child Care Providers to Build Quality!*



Funding provided by:



School Readiness Department  
10474 Mather Blvd., P.O. Box 269003  
Sacramento, CA 95826-9003  
(916) 228-2506 fax (916) 228-2566  
[www.scoe.net](http://www.scoe.net)

